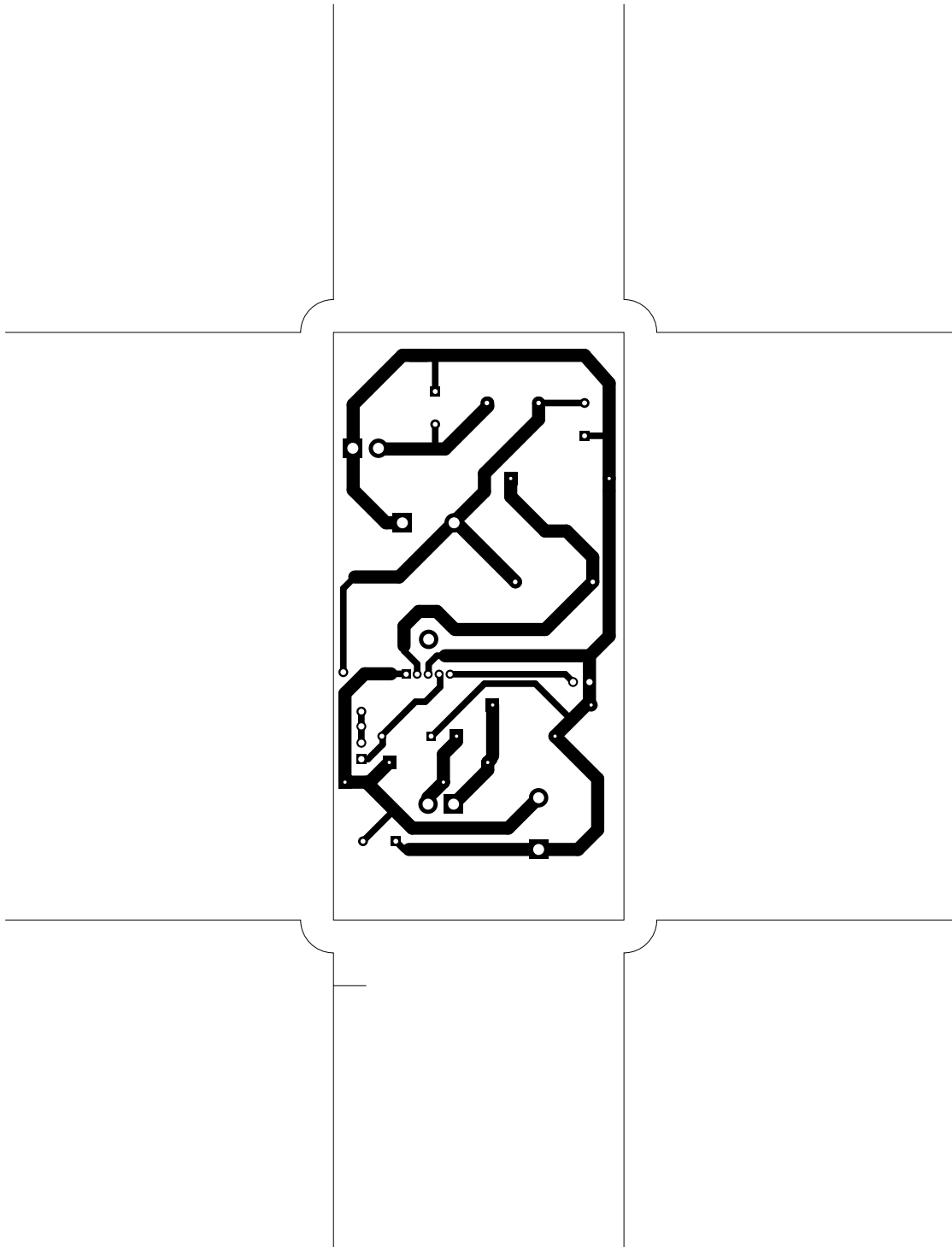
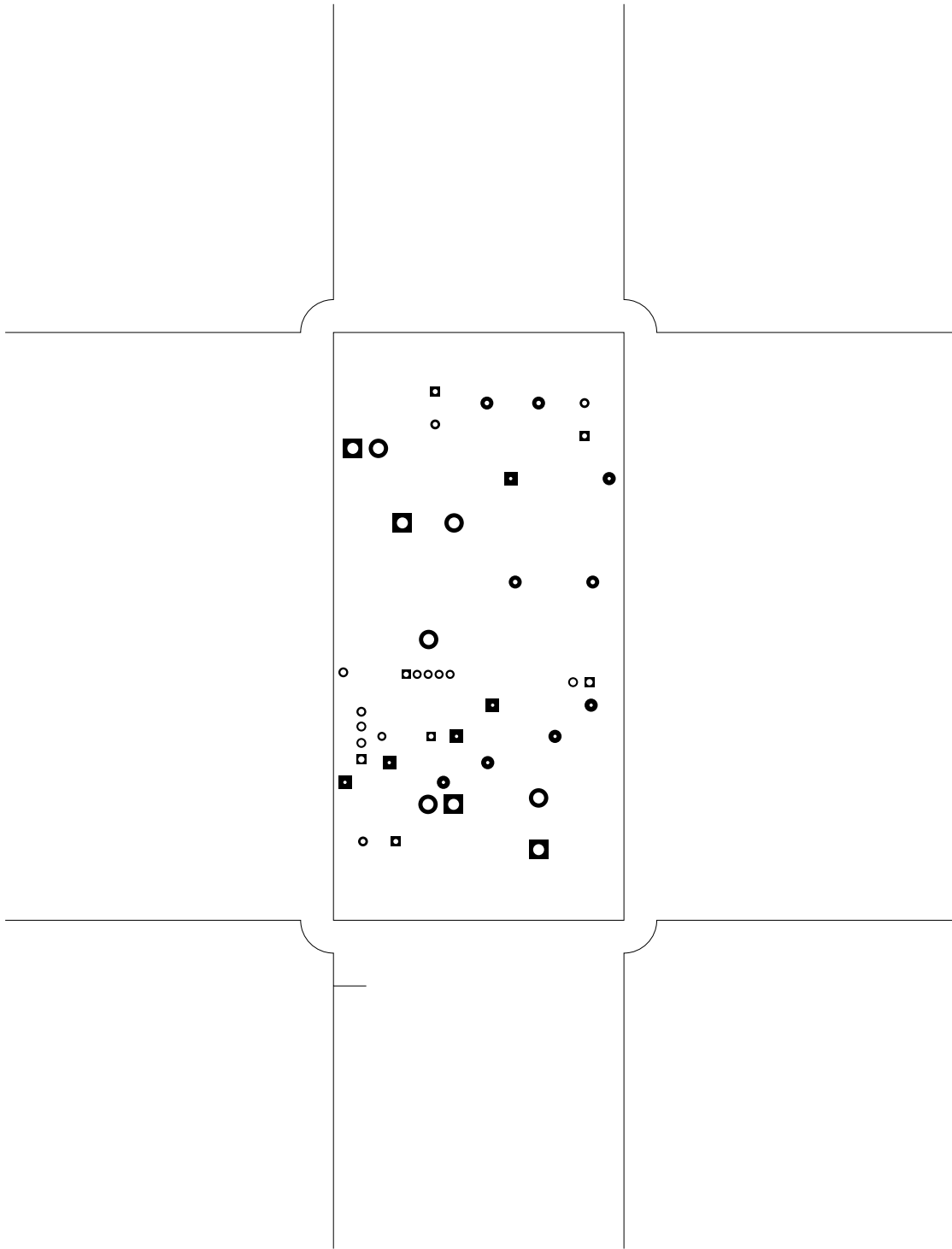
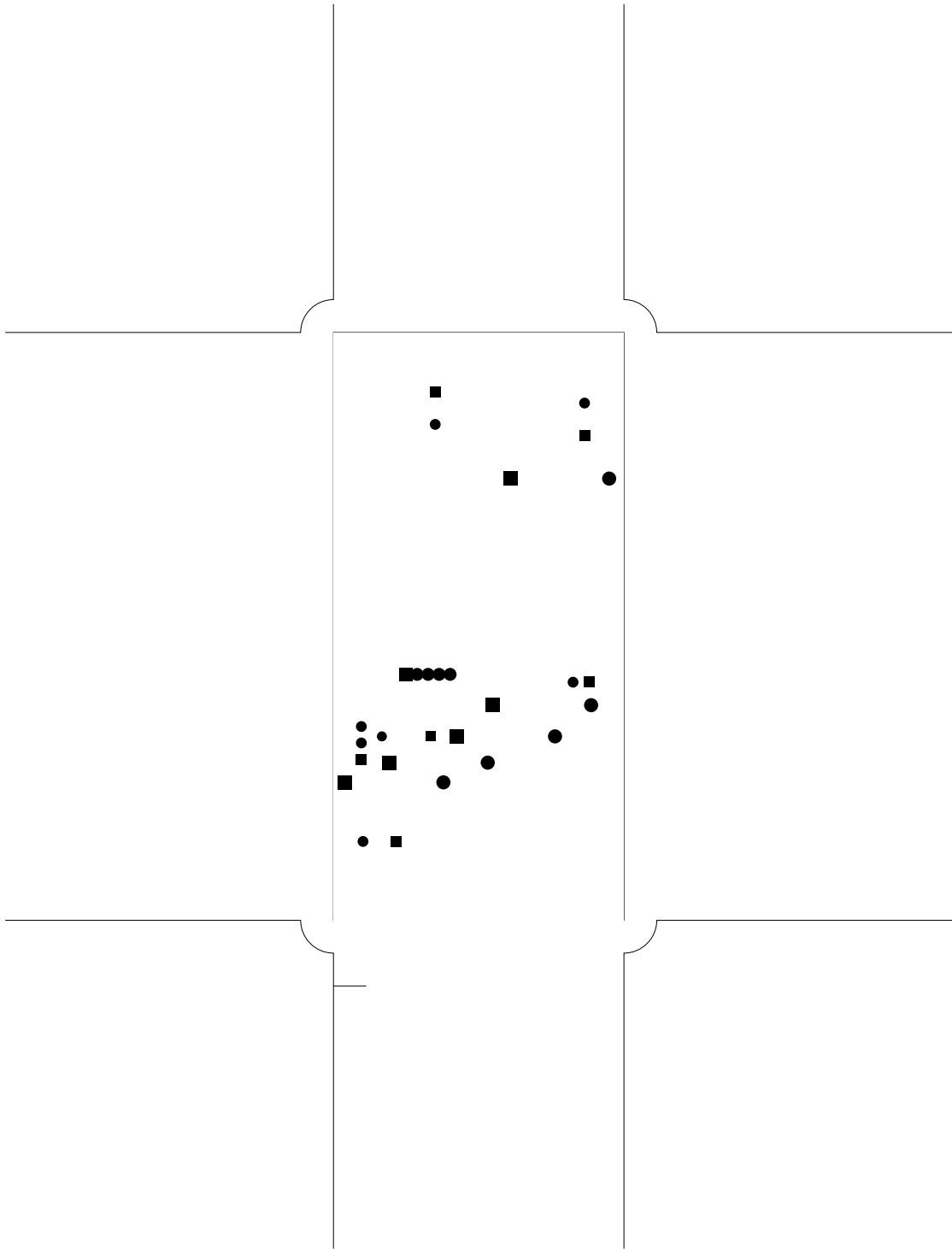
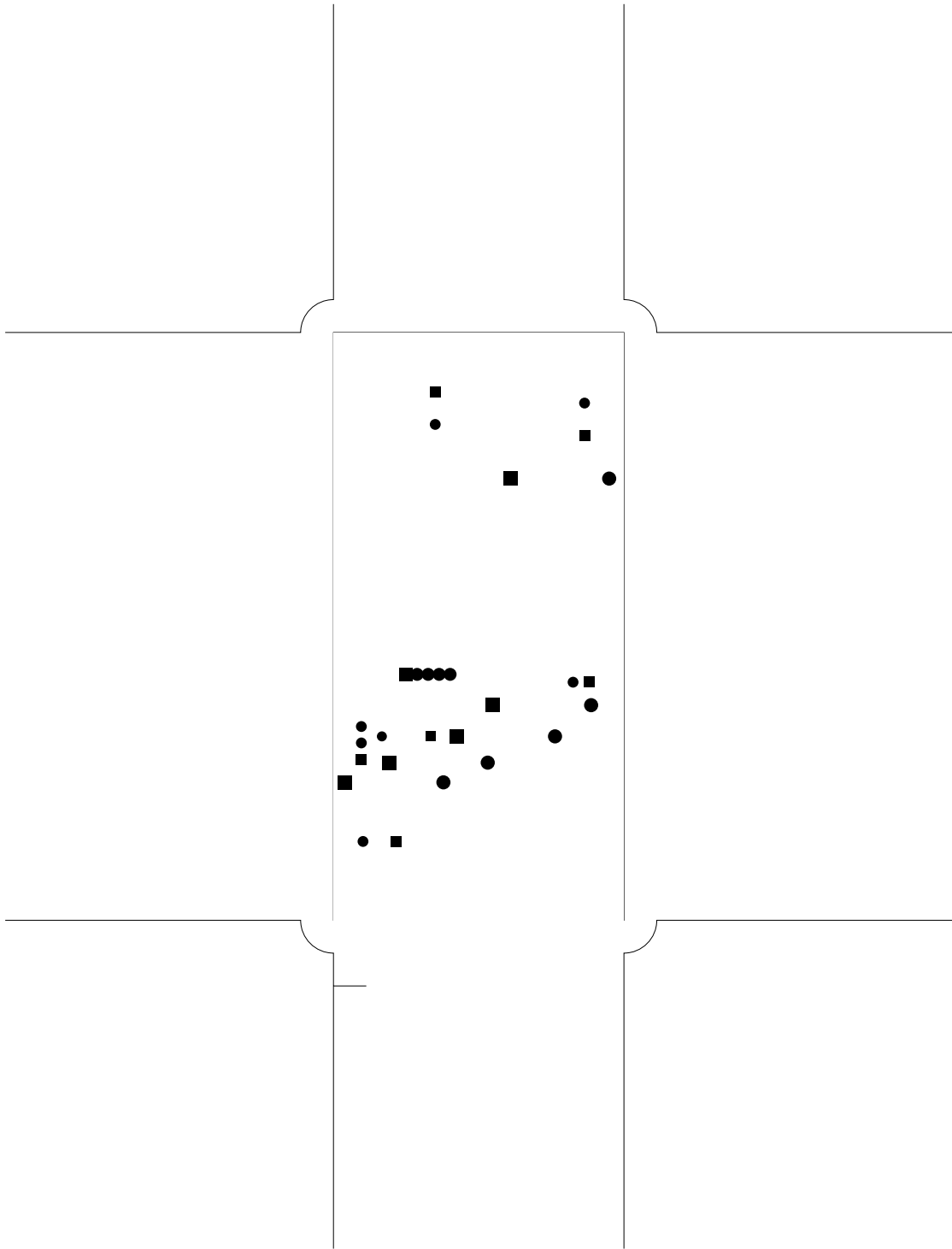


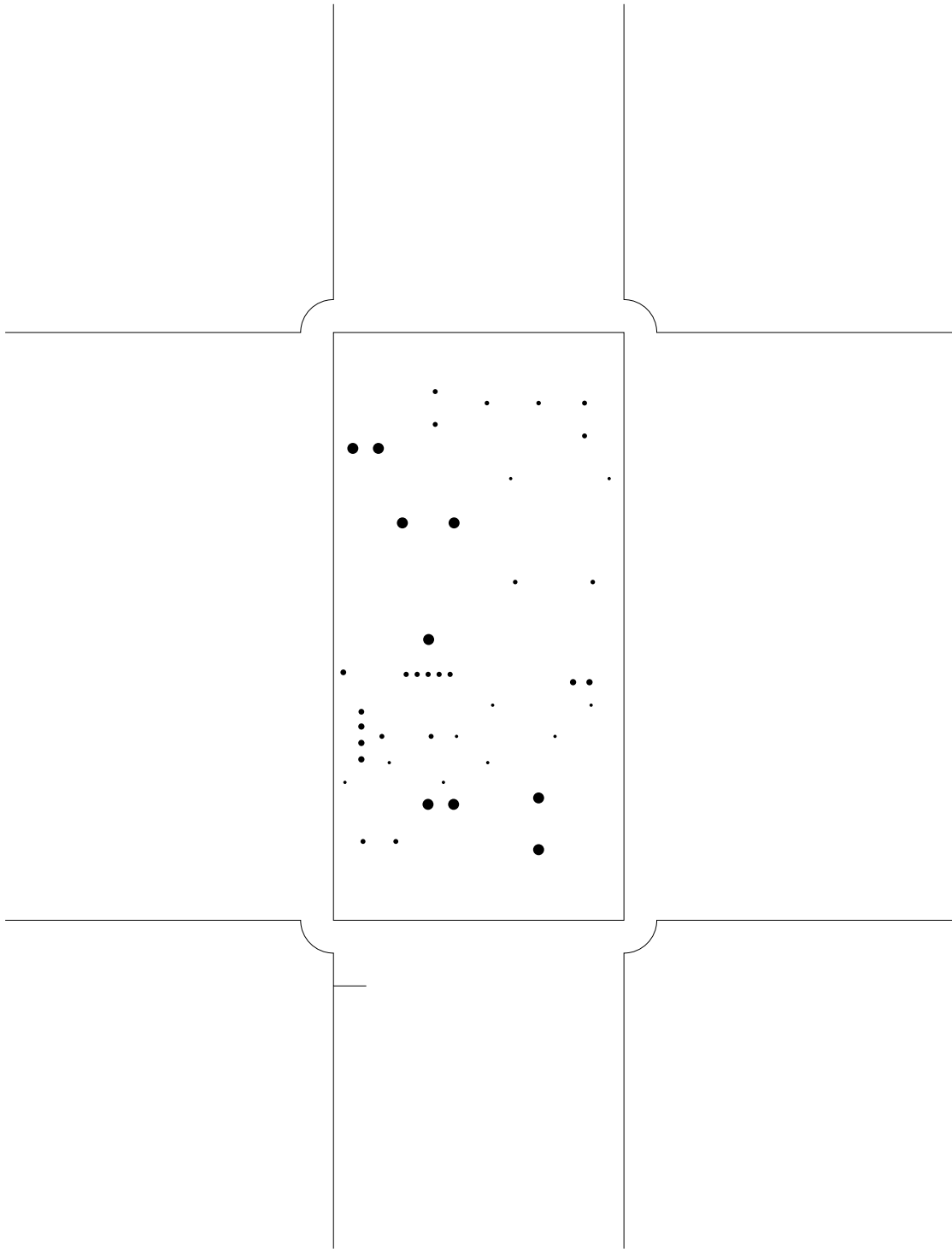
2. solder
3. component
4. componentmask
5. soldermask
6. plated-drill
7. topsilk
8. bottomsilk
9. topassembly
10. bottomassembly
11. fab

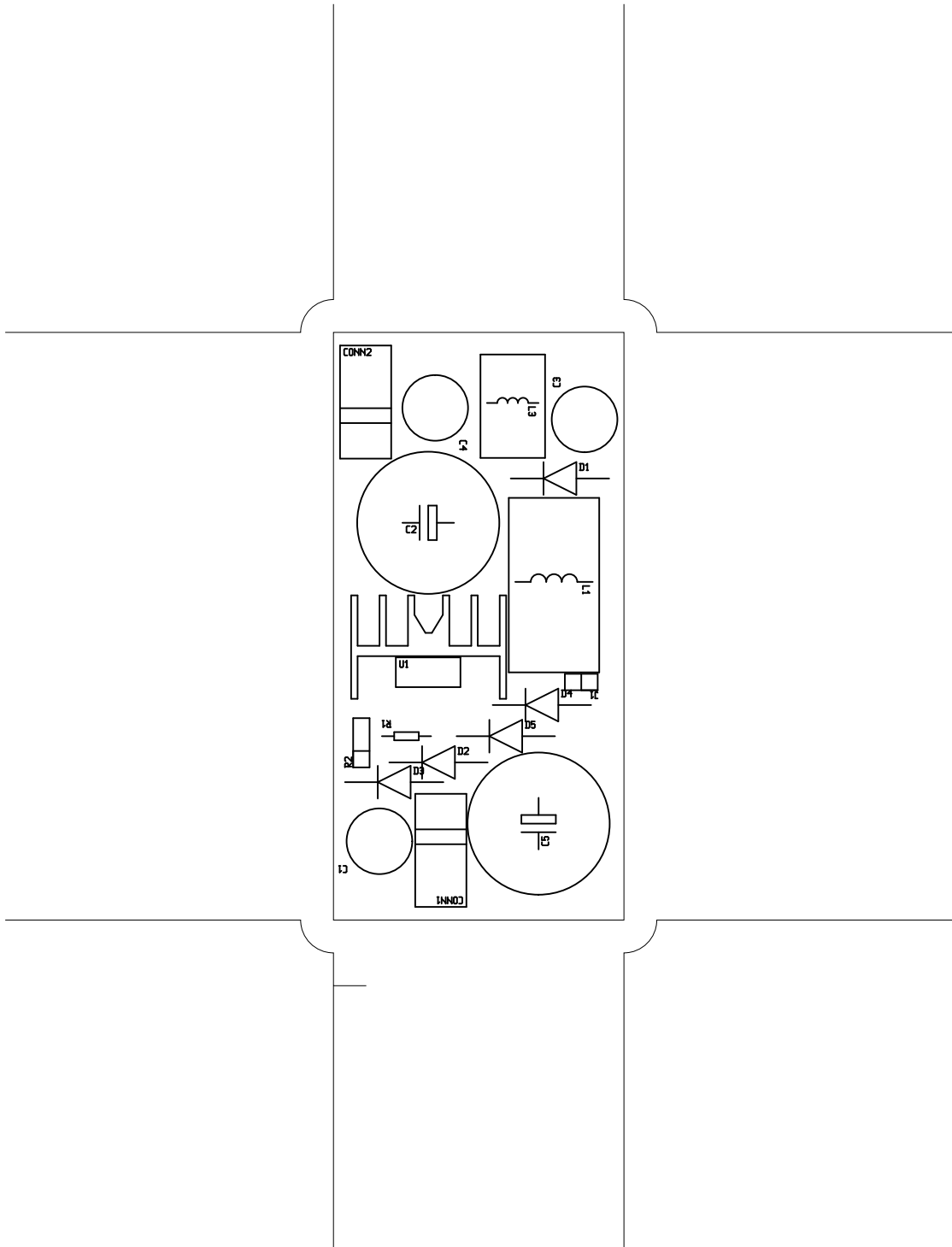


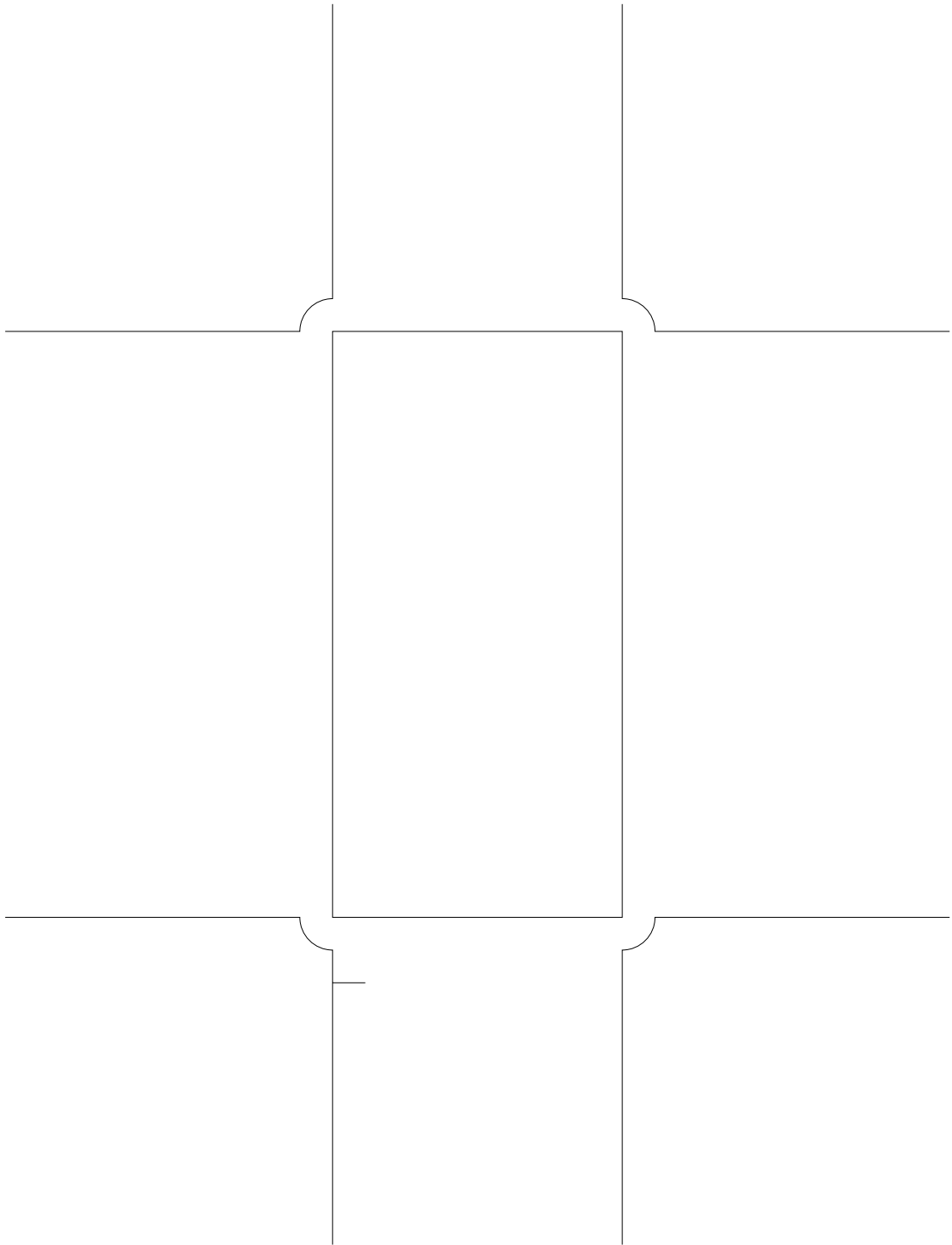


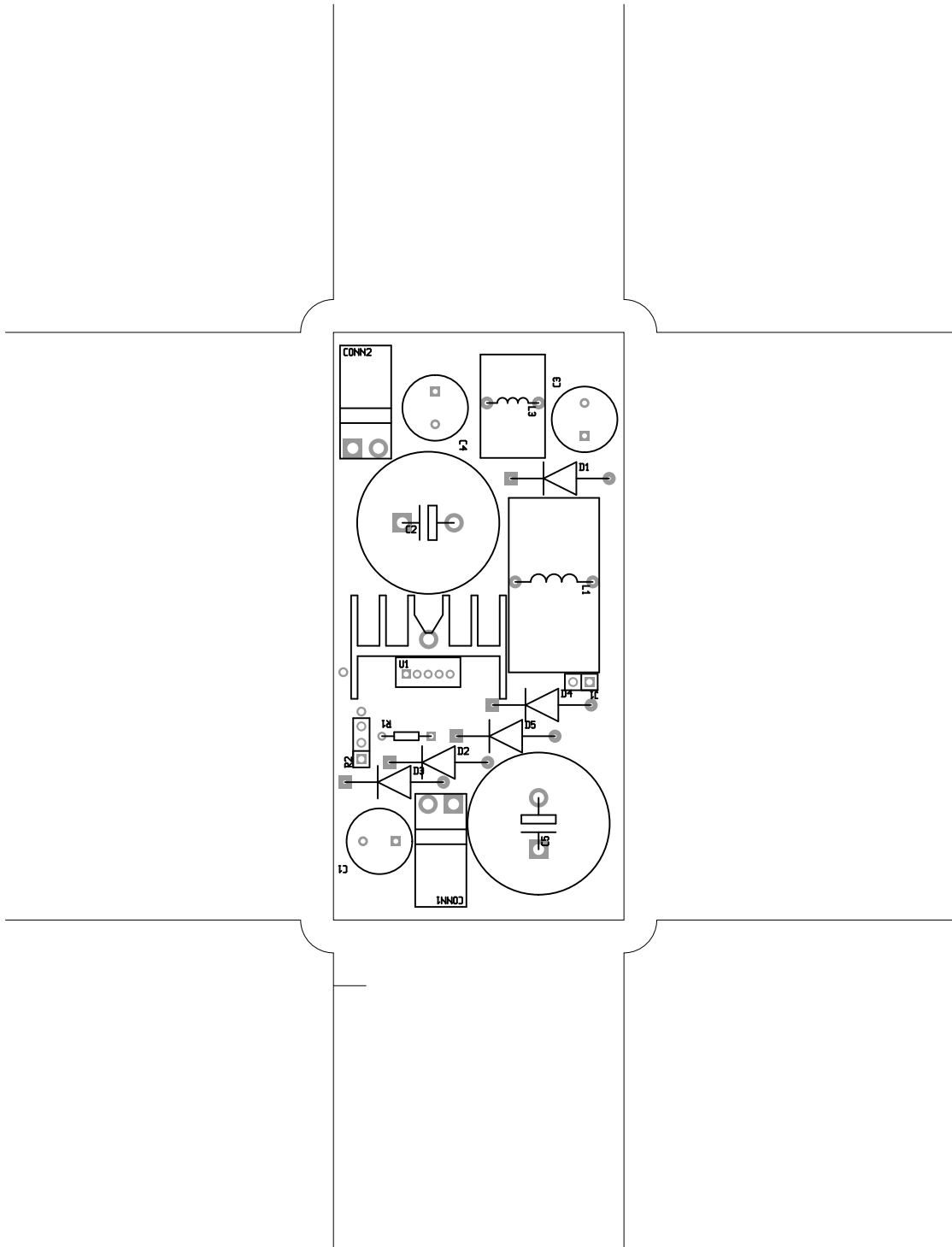


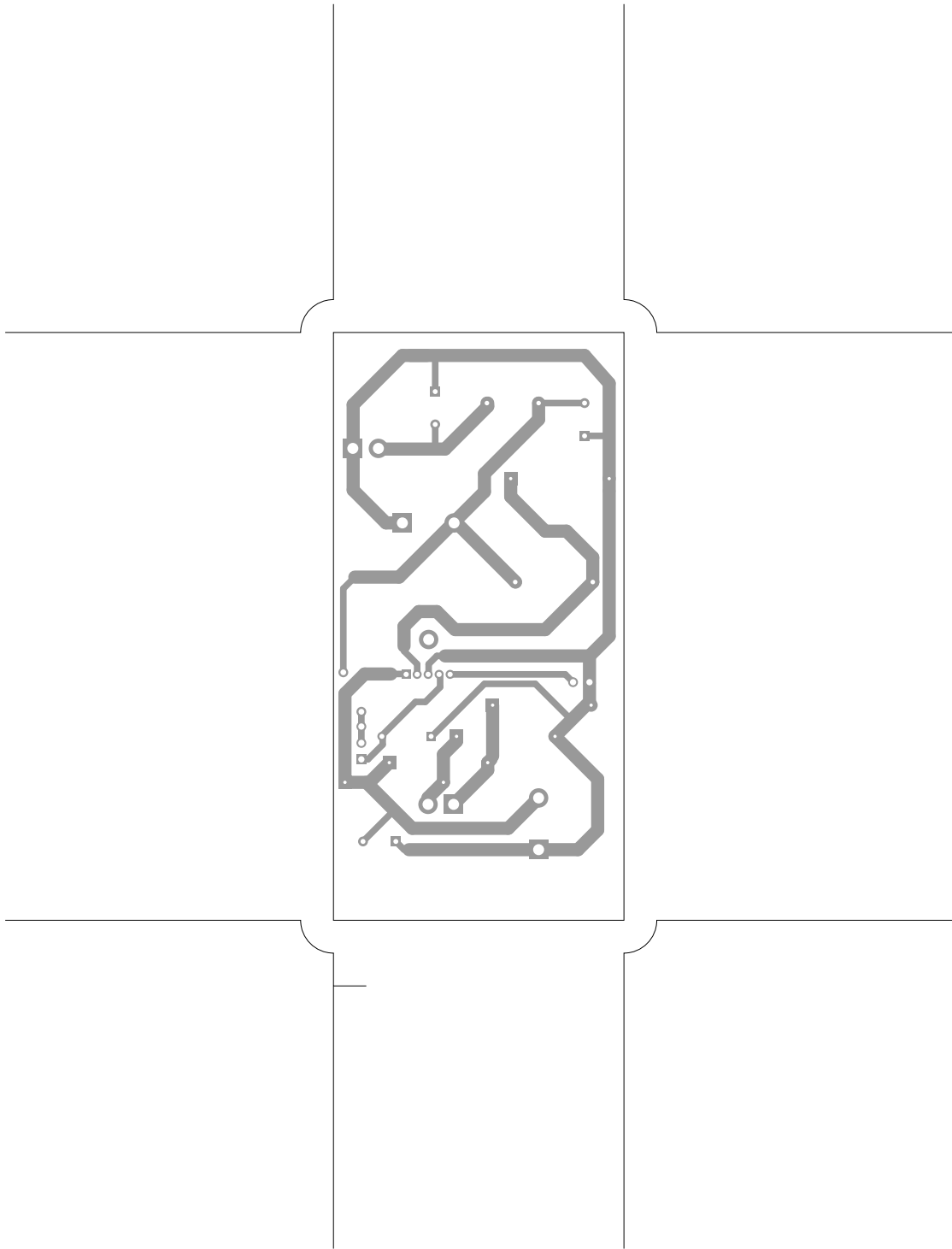












There are 7 different drill sizes used in this layout, 43 holes total

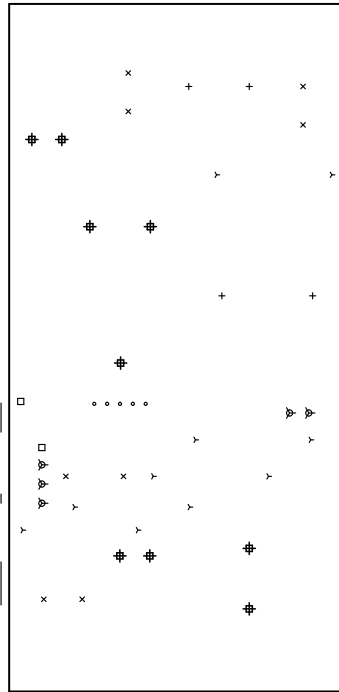
Symbol	Diam. (Inch)	Count	Plated?
y	0.020	10	YES
+	0.028	4	YES
x	0.030	8	YES
o	0.031	5	YES
□	0.035	2	YES
∅	0.038	5	YES
#	0.067	9	YES

Title: (unknown) - Fabrication Drawing

Author:

Date: Wed Nov 4 23:28:17 2009 UTC

Maximum Dimensions: 3580 mils wide, 1770 mils high



Board outline is the centerline of this 10 mil rectangle - 0.0 to 3580,1770 mils